

# ZPE Systems

# Network Infrastructure Management Platform

Built for enterprise, trusted by tech titans



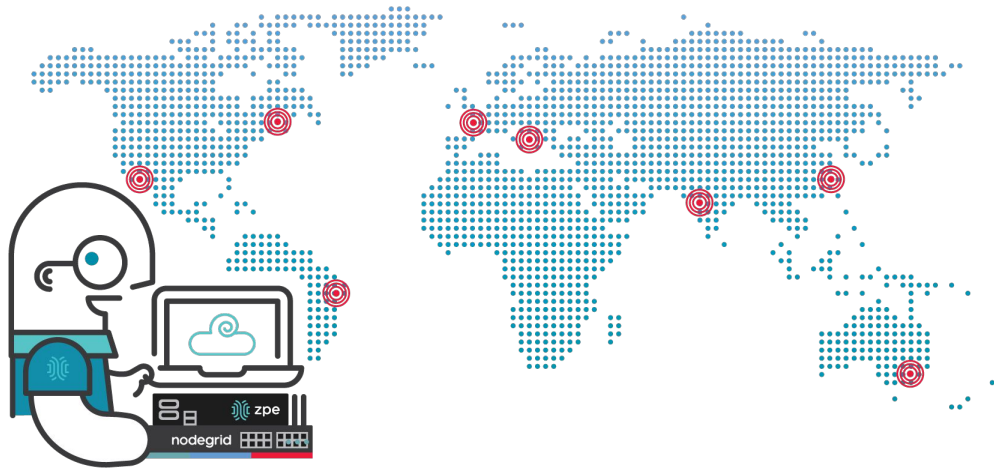
@ZPESystems



info@ZPESystems.com



zpe<sup>®</sup> info@ZPEsystems.com @ZPEsystems



# Hello!

## We are ZPE Systems.

**Founded:** 2013

**Headquarters:** Silicon Valley, CA

**Global & Enterprise Customers:** >300



- **What:** ZPE Systems addresses the pain in infrastructure reliability, holistic security, and personnel shortage of large enterprises & digital service providers— including 6 of the top 10 global tech giants – by delivering on what Gartner calls Infrastructure Hyperautomation
- **How:** Enterprises trust ZPE’s Intel-based serial consoles, services routers, sensors, zero-touch zero-trust provisioning and cloud managed out-of-band automation, to eliminate human error and operate an agile, easy to manage, secure and resilient infrastructure from datacenter to distributed edge at scale



**Nodegrid Manager  
Reviews**  
by ZPE Systems in Network Automation and Orchestration Tools  
4.7 ★★★★★

**Gartner Peer Review gives 4.7 out of 5 stars!**

Enterprises trust ZPE's out-of-band network management platform to eliminate human error and achieve agile, easy-to-manage, resilient network infrastructure – from the datacenter to the edge.

# Network Infrastructure Management

**Customers deploy ZPE Systems' solutions wherever they need secure, reliable, and scalable networking.**

ZPE's network infrastructure management keeps data center and edge locations online and agile, delivering features that include smart out-of-band, cellular failover, and devices that directly host 3rd-party applications.

# ZPE Product Portfolio

## Data Center Campus & Colocation

### Nodegrid Serial Consoles (NSC)

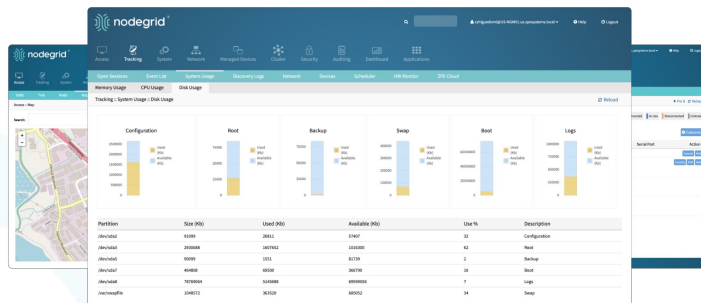


## Remote Branch & Edge

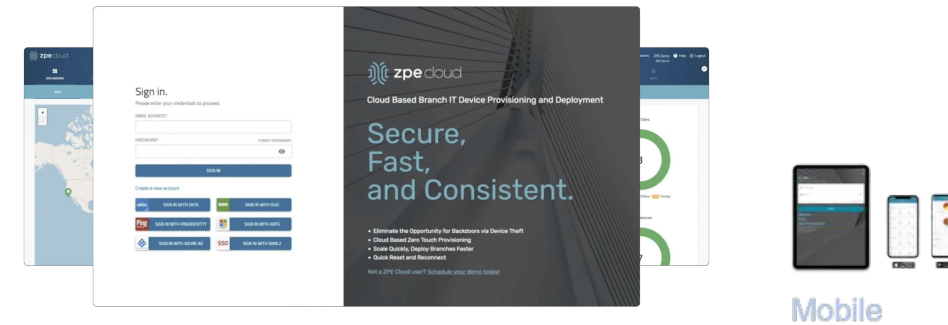
### Nodegrid Services Routers (NSR)



### Nodegrid Manager



### ZPE Cloud



### Sensors / Actuators



### Cloud Applications



[Explanations on our Website](#)

# Building a Zero Pain Ecosystem

## ZPE in the datacenter, campus and colo

- Programmable Gen 3 out-of band serial consoles and service routers
- End-to-end automation with ansible, puppet, chef, saltstack
- Smart PDU control and lights out management

## ZPE for remote critical infrastructure and branch edge

- Recovery of remote equipment through Out-of-band management
- 5G/LTE independent out-of-band network that can also be used business continuity with in-band Cellular failover
- Zero-touch Zero-trust provisioning of remote hardware and services for staging
- NetDevOps for end-to-end branch automation

## ZPE as cybersecurity platform and Intelligent Edge

- In-band networking and with all of the best in class Gen 3 out-of-band management
- Host 3rd party VM such as SD-WAN, Firewalls for holistic security
- SD-WAN & SD-Branch with ZPE APs

# Additional Resources

- Automation Blueprint → [Download](#)
- ZPE Products: → [Link](#)
  - Nodegrid Serial Consoles
  - Nodegrid Service Routers
  - Environmental Sensors
  - ZPE Cloud Management
  - SD-WAN
- Case Studies → [Link](#)
- ZPE thought leadership blogs → [Link](#)