

- Past Issues
- News Center
- Research Center
 - Webinars
 - Events
 - Sponsors
 - Members

FEATURED SPONSOR:



IN THIS ISSUE

- ▶ AI & Mobile Transformation
- ▶ Efficient Mobile O-RAN & DAS
- ▶ Satellite Connectivity Trends
- ▶ eSIM, iSIM, IoT & Industry 4.0
- ▶ US MVNO Growth Breakout
- ▶ Satellite for IoT, 5G & 6G
- ▶ V2X for Autonomous Cars
- ▶ Mobile Edge Innovation
- ▶ AI Risks & Really Smart Phones
- ▶ GenAI Network Transformation
- ▶ Letter from the Editor
- ▶ IT & Telecom Technology News
- ▶ Article Index



PIPELINE / VOLUME 21 / ISSUE 4

PL

MOBILE ECOSYSTEM TRANSFORMATION

SAVING POWER WITH MOBILE O-RAN FEATURING: **SOLID**

2025 SATELLITE TRENDS

MAXIMIZING MOBILE CONNECTIVITY

UNDERPINNING IOT, 5G, 6G AND BEYOND



SOLVING MOBILE LATENCY REALLY, REALLY SMART PHONES AI & NETWORK TRANSFORMATION



MVNO BREAKOUT

V2X & AUTONOMOUS DRIVING

MOBILE & WIRELESS

NEWSWIRE

Not for



Not for distribution or reproduction

LATEST UPDATES

ADVANCED ANALYTICS

WEBINAR:

A Dynamic Panel Discussion
Featuring Industry Leaders

PARTICIPATE



Pipeline

The Impact of Transformation



A Dynamic Panel Discussion
Featuring Industry Leaders

VIEW



Pipeline

Research Center

- Promote Content & Collateral
- Target-market Visibility
- SEO Optimized
- Capture Sales Leads

UPLOAD ASSETS

Pipeline



Be Recognized as a
Top Industry Innovator



EXCLUSIVE
SPONSORSHIP
PACKAGES
AVAILABLE

Hyperinteractive Ads

- Targeted
- Perpetual
- Extensible
- Hyperinteractive
- Capture Opportunities

PLACE YOUR ADS NOW

Pipeline



Dynamic Webinars

- Superior Quality
- Engage Buyers
- Extensive Lead Gen
- Expert Moderation
- Speaker Support
- Advanced Platform

[REQUEST WEBINAR INFO](#)

Pipeline

Memberships

- Unlimited Services
- Best Pricing
- Elevated Visibility
- Direct Access

[BUILD YOUR PACKAGE](#)

Pipeline

The Network Transformation Imperative

A Dynamic Panel Discussion
Featuring Industry Leaders

[VIEW](#)



Pipeline

Pipeline Video Services

- On-site Videos
- Animation and Whiteboard
- User Interface Demonstrations
- Editorial Interviews

[GET STARTED >>](#)

Pipeline

Pipeline WEBINAR

Leverage *Pipeline* to
Expand Your Brand &
Your Thought Leadership

Ads

Editorial

Events

Awards

Branding

Memberships

News

Webinars

Research

[WATCH VIDEO NOW](#)

Not for distribution or reproduction



Not for distribution or reproduction

Pipeline
MARKET RESEARCH

**CUSTOM RESEARCH
REPORTS & SURVEYS**

LEVERAGE THE
COLLECTIVE KNOWLEDGE
OF THE GLOBAL MARKET

[GET PRICING & DETAILS](#)

**HOW TO
BE INCLUDED IN PIPELINE**

[CLICK HERE ▶](#)



Pipeline Video Services

- On-site Videos
- Animation and Whiteboard
- User Interface Demonstrations
- Editorial Interviews

[GET STARTED >>](#)

Pipeline

Check Out the Latest Content

- Whitepapers
- Case Studies
- Webinars
- Videos
- Articles
- Surveys

[READ NOW >>](#)

Pipeline

CONNECT WITH US

[Follow @PipelineWire](#)

[Back](#) [More](#)

Latest Issues





[Advertising Placements](#)

[Sponsor Articles and Issues](#)

[View More Issues](#)

TRENDING NEWS

BrainChip Provides Low-Power Neuromorphic Processing

[Full Story>](#)

NVIDIA Partners with Healthcare Leaders

[Full Story>](#)

Ericsson Enhances Enterprise 5G Portfolio

[Full Story>](#)

AT&T Enhances Florida Emergency Response

[Full Story>](#)

Keysight Signs Virtual Power Purchase Agreement

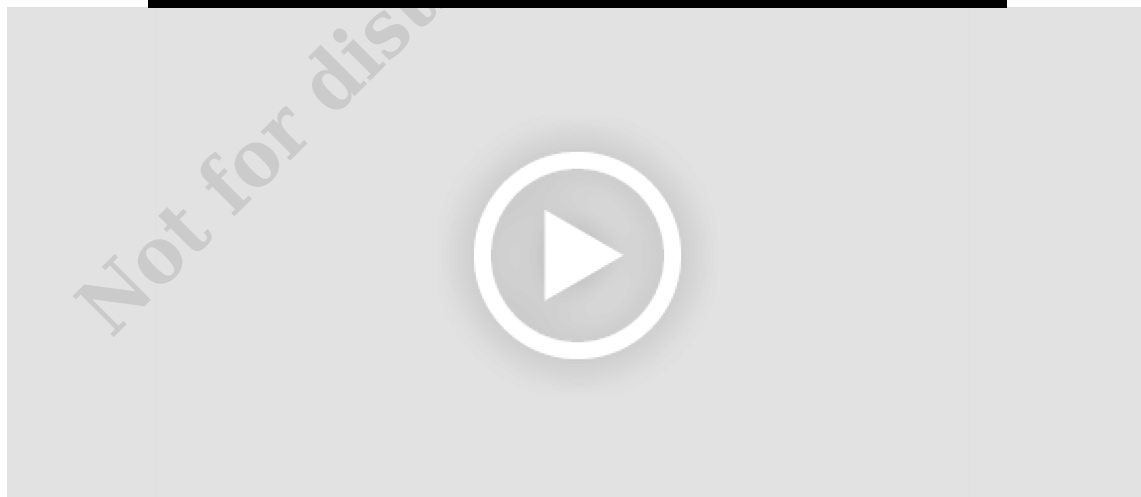
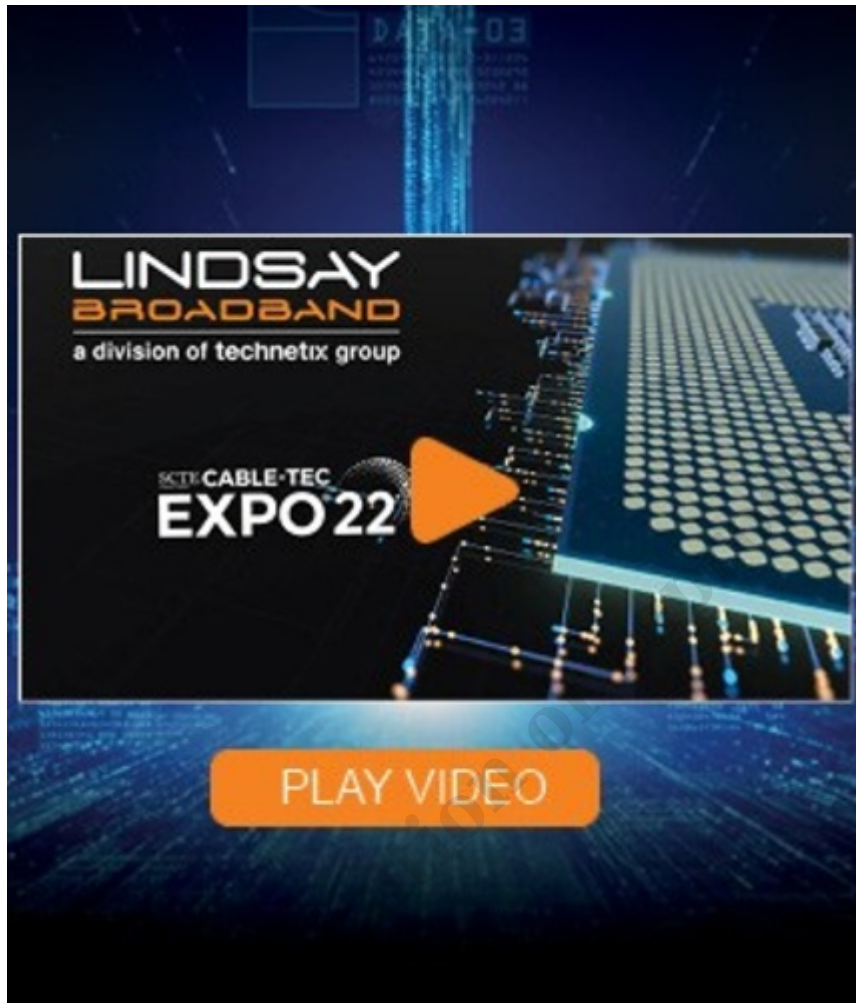
[Full Story>](#)

VIAVI Introduces AI RSG

[Full Story>](#)

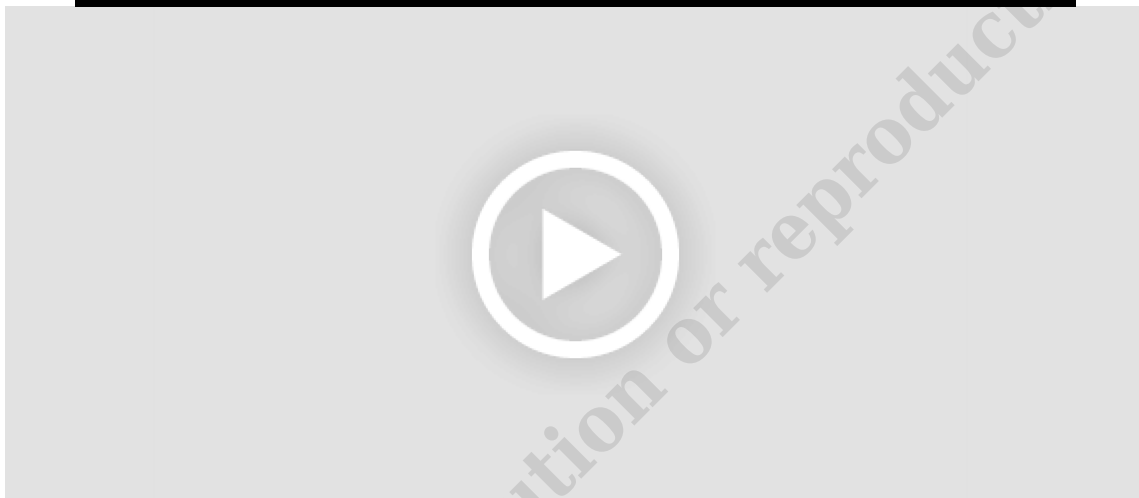
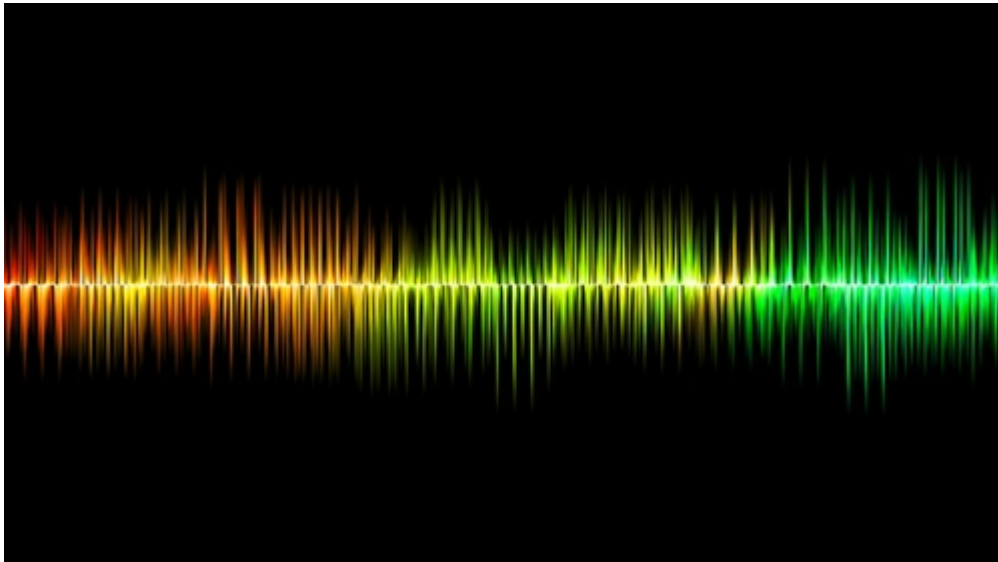
[View More News](#)

Featured Content



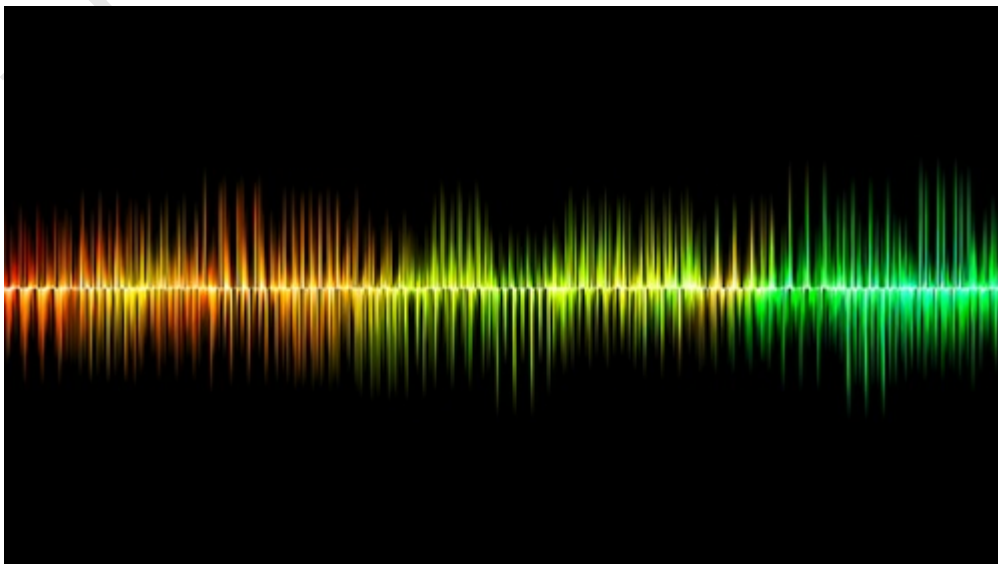
End-to-End Solutions for Broadband Networks

In case you missed Lindsay Broadband - a division of Technetix group at the SCTE Cable-Tec Expo, this video highlights the must-have, end-to-end solutions for your network.



Predicting Colonial Pipeline: Mitigating Risk and Compliance

Mitigating risk and compliance for lawful intercept using lawful intelligence is explored in this Pipeline article feature SS8. Learn how CSPs can comply with lawful intercept regulation, while empowering law information with critical, real-time data.





Podcast: The Evolution to 6G

The world's eyes are already looking forward to the potential of 6G. Demands resulting from innovative use cases, for instance specific requirements from different industries and other user groups, as well as overarching goals like sustainability, are driving the standardization and development of mobile technologies.

[Request Video](#)

[View More Videos](#)

Latest Webinars

Previously live

IT Ukraine Association **JEVERA**
software solutions

23 NOV 2023
4PM EET
online

Discover how to mitigate risks of 2024

**“DIGITAL TRANSFORMATION
FOR TELCOS: A 101 GUIDELINE”**



The Impact of Transformation

*A Dynamic Panel Discussion Featuring
The Industry's Top Thought Leaders*



© 2018. All rights reserved.



The Network Transformation Imperative

*A Dynamic Panel Discussion Featuring
The Industry's Top Thought Leaders*



© 2018. All rights reserved.



Agile Architecture for Digital Innovation

*A Dynamic Panel Discussion Featuring
The Industry's Top Thought Leaders*



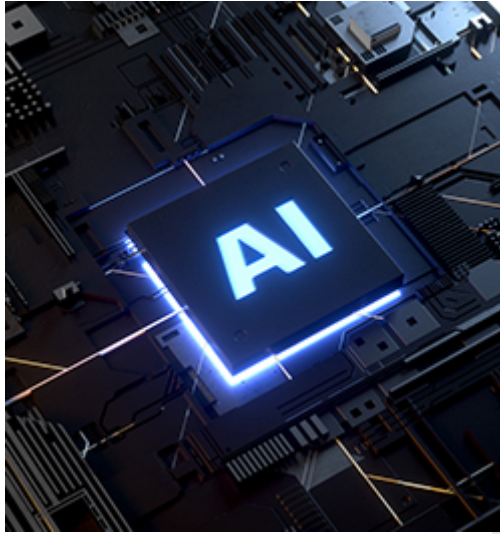
© 2017. All rights reserved.

[Participate in Webinars](#)

[Join Next Webinar](#)

[View More Webinars](#)

Latest Articles



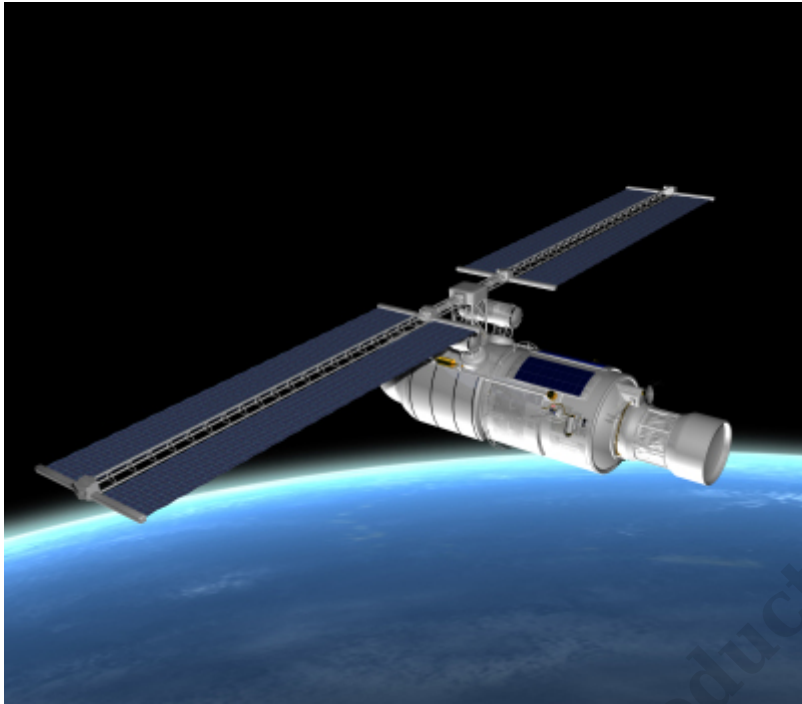
AI & Mobile Transformation

[Order Article Reprint](#) [Read More](#)



Efficient Mobile O-RAN & DAS

[Order Article Reprint](#) [Read More](#)



Satellite Connectivity Trends

[Order Article Reprint](#) [Read More](#)



eSIM, iSIM, IoT & Industry 4.0

[Order Article Reprint](#) [Read More](#)

[Sponsor Articles](#)

[Advertising Placements](#)

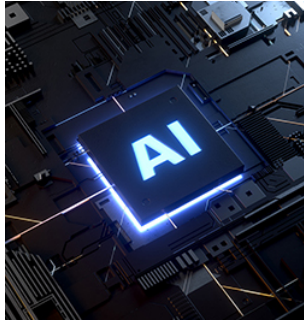
TRENDING ARTICLES



UI & UX Data Design



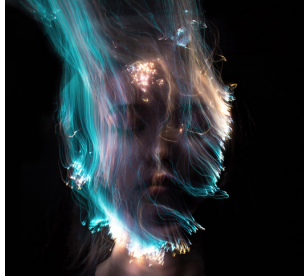
Telecom & IT Technology News



Enterprise ROI for GenAI



Flexible B/OSS for Self Service



Filling the Tech Skills Gap
[View More Articles](#)

Other Featured Content



keeping the world connected



Communication is our lifeblood. It's what makes the world run and gives our lives meaning. Though technology evolves, the desire to seamlessly and securely access and exchange information anywhere, anytime never changes. While technological advances make communications simpler and more ubiquitous, efficiently interconnecting disparate applications, networks and devices and delivering it to the right person, at the right time, in the right way is enormously complex.

Creating a globally connected world is what iconectiv does better than anyone. Our cloud-based Software as a Service (SaaS) solutions and **trusted communications platforms** span network and operations management, numbering, business-to-consumer communications and fraud prevention.

At iconectiv, **our vision** is a world without boundaries, where the ability to access and exchange information is simple, seamless and secure.

And **our mission** is enabling the world of tomorrow through the simple, seamless and secure interconnection of networks, devices and applications.

business principles

With unparalleled leadership and legacy in global communications, iconectiv strives to make connectivity:

simple – making the systems and processes that are extraordinarily complex, comprehensible

seamless – simplifying information exchange, on a global scale, and making it instantly available

secure – entrusted with the critical data that makes the world run





FSP 3000 OLS

A versatile and truly open line system

5G and cloud-based applications offer enterprises, carriers and service providers enormous potential for growth. However, this continuous and rapid change also creates the need for more network capacity and flexibility. It's essential to build today's networks on an open, flexible and scalable optical layer ready to accommodate evolving demand and innovation. Featuring a fully modular and open design, our FSP 3000 open line system (OLS) provides complete versatility and best performance in metro, core and data center interconnect (DCI) applications.

Truly open

Open disaggregated optical networking is one of the industry's hottest trends. By decoupling terminal functions from the line system, this approach offers complete flexibility to adopt the latest technology when and where needed. Our FSP 3000 OLS is truly open, allowing total freedom to evolve and optimize each network layer separately. Network operators can leverage and expand their infrastructure at any time with the technology of their choice. What's more, with open and standard interfaces, our FSP 3000 OLS easily integrates into software-controlled networks.

Build your own OLS

Our FSP 3000 OLS empowers network operators to create the solution that meets their exact requirements. With a modular architecture, multiple amplification and multiplexing options, and different chassis sizes, our FSP 3000 OLS enables customized solutions. Operators can simply mix and match the optimum filters and amplifiers and pack them into the best-fitting shelf. This makes our FSP 3000 OLS ideal for any type of network infrastructure.

Future-proof investment

Coherent modulation schemes are becoming increasingly diverse to maximize transport network capacity and minimize the cost-per-bit of transport. Flexible terminals with variable modulation formats and baud rates enable higher capacity-reach rates. The ultimate network performance relies also on line system capabilities, and that's why open line systems have increasingly become important strategic assets. With a combination of high-performance features, our FSP 3000 OLS transports any coherent modulation format as well as all varying signal baud rates with best performance. The high-resolution flexgrid and modular architecture of our ROADMs guarantee a future-proof OLS that can scale and accommodate any modulation format and baud rate. What's more, our FSP 3000 OLS provides a new level of flexibility with configurations able to support direct detect technologies.

Your benefits

- ▶ **Open hardware**
No technology or vendor lock-in; successfully tested in multi-vendor environments
- ▶ **Open programmable interfaces**
Easy integration into software-defined networks with open, programmatic APIs
- ▶ **For any type of network infrastructure**
Modular design with multiple amplifiers and filter options to meet your exact requirements
- ▶ **Purpose-built components**
Amplifiers and filter options engineered for metro, core and DCI-specific demands, and optimum transport of latest innovation, e.g., 400ZR and high baud rates
- ▶ **Visualization and control**
Comprehensive monitoring and diagnostic tools, spectrum visualization and fiber surveillance
- ▶ **Eco design**
High-density design with low power consumption
- ▶ **Flexible footprint**
Chassis sizes from 1RU to 12RU, ETSI / data center rack, AC/DC power options



Not for distribution or reproduction.

eliminate the
guesswork with
**GIS/CAD
services**



Accurate and up-to-date mapping is crucial to nearly every element of your business. Everything from network maintenance, emergency response, budget forecasting, and company valuation require these records to keep your company on course.

Relying on single point dependencies and perishable paper records create vulnerabilities for your customer, community and company. CHR's GIS/CAD Services take the guess work out of geospatial management and ensure your business is on the right path.

MANAGED GIS/CAD SERVICES

- Data extraction and normalization from paper to CAD
- Database and coordinate creation (lat/long, roads, hydrology, landmarks, row)
- Data exports to OneCall-Geisec & Google Earth
- Data imports (FEMA, soils, DFW, FCC)
- Graphical object assignment (Routes, pads, C&G)
- Aerial Imagery and GPS
- Ongoing system updates and support of geospatial data
- Report, query and analytic capabilities
- Data files hosted on CHR servers
- Facilities management systems integration
- Advisory support and recommendation of network improvements



ph 713.351.5111 email info@CHRSolutions.com



Opportunity in the Air
Congestion Management and the Mobile
Broadband Revolution

www.tekelec.com

Not for distribution or reproduction.



COLLECT. MONITOR. ANALYZE. VISUALIZE.



Actionable Intelligence for a Safe, Secure and Connected World

SS8 Networks provides the fastest and simplest way to collect, monitor, analyze, and visualize lawful interception data. For more than 20 years, we have been evolving and innovating to match the changing needs of Communications Service Providers (CSPs) and Law Enforcement Agencies (LEAs), while delivering comprehensive solutions that are easy to use and optimized for the best results.

Our solutions make analyzing, enriching and managing complex data sets simple, helping LEAs stop organized crime, catch criminals, and prevent terror attacks. For CSPs, we provide a trusted foundation for meeting regulatory requirements efficiently and effectively.

OUR SOLUTIONS

- Complete mediation and interception
- Law enforcement monitoring center
- 56** 50 regulatory compliance
- End-to-end Lawful Intelligence system
- Comprehensive data analytics

ACTIVE IN **35** COUNTRIES → COVERING **1BN** SUBSCRIBERS

70% MARKET SHARE **US&UK**
We are the top provider in the US and UK for Mediation and Monitoring platforms.

8 OF 14 WORLD'S LARGEST
We work with 8 of the world's 14 largest communication service providers.

150 VENDOR INTERFACES
Proven network equipment interoperability with over 150 vendor interfaces to expedite deployment.

ONTOLOGY™



Know your network: Now.

i360 | **FOR NETWORK OPERATORS**

ONTOLOGY 5

Ontology 5 Intelligent 360 for Network Operators | v4.0 2015



WiFi solutions

For more than 75 years, CHR has designed, built, managed and more fixed networks that matter— including one of the first five LTE networks in the nation and fully integrated WiFi networks for the Department of Defense.

Whether your goal is to implement a WiFi network that guarantees outstanding coverage for broadband Internet access or you're seeking new revenue streams by becoming a VoIP or Wireless Internet Service Provider, our experience enables the entire ecosystem.

CHR's WiFi Solutions include flexible end-to-end or à la carte options that range from concept to construction, to customer management. Our certified engineers and best-of-breed partners stand ready to aid in every aspect of your WiFi project.

Videos



Whitepapers

Mediation for the Changing Business Environment

Mediation as a BSS/OSS Interaction Layer in Anticipation of Telco 2.0

© Independent Technology Systems Limited 2009

All rights reserved.

The information contained within this document or application is the property of Independent Technology Systems Limited ("Intec") which is confidential and protected by international copyright laws and any unauthorized use of this document or application or its contents may violate copyright, trademark, and other laws. No part of this document or application may be photocopied, reproduced or translated in any form or by any means, or stored in a retrieval system or transmitted electronically or otherwise, without the prior written consent of Intec.

If you breach any of these terms, your authorization to use this document or application automatically terminates. You may not modify this document or application or its contents in any way or publicly display, perform, or distribute or otherwise use this document or application or its contents for any public or commercial purpose. Any use of this document or application or its contents for any other purpose other than as mutually agreed upon with Intec is prohibited.

Although every Endeavour has been made to ensure that the information contained within this document or application is up to date and accurate, Intec cannot be held responsible for any inaccuracy or error in the information contained within this document or application. Intec makes no warranty of any kind with regard to the information and Intec shall not be liable for any direct, indirect, incidental or consequential damages which may arise in connection with the furnishing, reliance or use of the information contained within this document or application.

Specifications and statements as to performance in this document or application are Intec estimates, intended for general guidance. Intec reserves the right to change the information contained within this document or application and any product specification and/or availability dates without notice.

Statements in this document or application are not part of a contract or program product license save insofar as they are incorporated into a contract or license by express reference. Issue of this document or application does not entitle the recipient to access or use of the products described, and such access or use shall be subject to separate contracts or license.

Ebooks



3 WAYS YOU WILL OVERPAY FOR YOUR MOBILE WORKFORCE MANAGEMENT SOLUTION AND 3 STRATEGIES TO AVOID IT





Implementing a Scalable, Common Element Management System for Large Multi-Vendor Networks

Verizon Business and Nakina Systems Case Study

In 2005, Verizon Business, set out to build a state-of-the-art, ultra-long haul (ULH) transport network and converged packet access (CPA) network initially comprised of more than 20 different types of equipment from 10 different equipment vendors.

Service Delivery Challenges

In order to deliver a new service across multiple network equipment providers (NEP) devices and SDNET/SDH, WDM, Ethernet, and IP/MPLS networking technologies, Verizon Business needed to integrate a complex set of networks and applications spanning up to thousands of network nodes.

Adding a new device type or application to this heterogeneous environment often required upgrading both hardware and software across the entire network. For a large scale networking environment, this can be an incredibly complex task since the new services need to be delivered via different NEP products and networking technologies.

The network initially comprised 20 different types of equipment from 10 different equipment vendors, spanning hundreds of thousands of network nodes.

Operations and Integration Challenges

Verizon Business used a mixture of operational and business support systems (OSS/BSS). These systems were deployed on unique platforms from different NEPs, operating with proprietary software applications and communications protocols.

NEP-provided EMSs tend to use proprietary OSS interfaces with varying levels of security and lacking the scalability needed by a large, global network operator.

Substantial system and software integration work was needed to make each EMS function sufficiently for the network operations personnel to manage the network. The effort to maintain multiple systems including hardware, element management systems (EMSs), testing and training could not be easily sustained to support the new services Verizon Business wanted to deliver.

The challenge facing Verizon is typical for a large, global communications service provider and can be summed up in a single word: complexity.



Living on the (Network) Edge:

A TELECOMMUNICATION PROVIDER'S GUIDE TO MAKING THE MOVE

The Internet of Things (IoT) is not new. Neither is the rapid rise of connected devices or customers' demands for instantaneous service. These are realities of digitalization. While they have become normalized, they are by no means the final destination on the journey to digital transformation. They are merely the first wave of the transformation process. In their wake, the next round of changes is brewing. These changes will require providers turn their focus to the periphery of their networks and get closer to their customers. This next frontier for providers to conquer? The Edge.

networktransformation.fntsoftware.com

Not for distribution or production.

MARKETING PLANNER WORKSHEET



Use the Pipeline Marketing Planner to create an integrated program to achieve your annual marketing objectives and corporate strategy. Select the brand building, thought leadership, and content creation services that will propel your company to new success. Plan the timing of these activities to coordinate with the issues of Pipeline that align to the topics most important to your company.

UPCOMING ISSUES

STRATEGIC MARKETING OBJECTIVE

BRAND BUILDING:

	JANUARY Market Transformation	FEBRUARY Partnership Mobility	MARCH Enabling Customer Experience	APRIL Edge Transformation	MAY Support Systems	JUNE Innovation	JULY AI & the Future of Business	AUGUST The Edge Continues	SEPTEMBER Big Data, AI & Advanced Analytics	OCTOBER Market Evolution & Disruption	NOVEMBER Security & Assurance	DECEMBER Top Trends
Run-of-Site Advertising	<input type="checkbox"/>	<input type="checkbox"/>	<input type="checkbox"/>	<input type="checkbox"/>	<input type="checkbox"/>	<input type="checkbox"/>	<input type="checkbox"/>	<input type="checkbox"/>	<input type="checkbox"/>	<input type="checkbox"/>	<input type="checkbox"/>	<input type="checkbox"/>
Embedded, Interactive Article Advertising	<input type="checkbox"/>	<input type="checkbox"/>	<input type="checkbox"/>	<input type="checkbox"/>	<input type="checkbox"/>	<input type="checkbox"/>	<input type="checkbox"/>	<input type="checkbox"/>	<input type="checkbox"/>	<input type="checkbox"/>	<input type="checkbox"/>	<input type="checkbox"/>
Weekly Newsletter Advertising	<input type="checkbox"/>	<input type="checkbox"/>	<input type="checkbox"/>	<input type="checkbox"/>	<input type="checkbox"/>	<input type="checkbox"/>	<input type="checkbox"/>	<input type="checkbox"/>	<input type="checkbox"/>	<input type="checkbox"/>	<input type="checkbox"/>	<input type="checkbox"/>
Monthly Newsletter Advertising	<input type="checkbox"/>	<input type="checkbox"/>	<input type="checkbox"/>	<input type="checkbox"/>	<input type="checkbox"/>	<input type="checkbox"/>	<input type="checkbox"/>	<input type="checkbox"/>	<input type="checkbox"/>	<input type="checkbox"/>	<input type="checkbox"/>	<input type="checkbox"/>
Spotlight Article with Cover Page Logo	<input type="checkbox"/>	<input type="checkbox"/>	<input type="checkbox"/>	<input type="checkbox"/>	<input type="checkbox"/>	<input type="checkbox"/>	<input type="checkbox"/>	<input type="checkbox"/>	<input type="checkbox"/>	<input type="checkbox"/>	<input type="checkbox"/>	<input type="checkbox"/>
Executive Spotlight/Video Interview	<input type="checkbox"/>	<input type="checkbox"/>	<input type="checkbox"/>	<input type="checkbox"/>	<input type="checkbox"/>	<input type="checkbox"/>	<input type="checkbox"/>	<input type="checkbox"/>	<input type="checkbox"/>	<input type="checkbox"/>	<input type="checkbox"/>	<input type="checkbox"/>
Cover Page Corner-wrap	<input type="checkbox"/>	<input type="checkbox"/>	<input type="checkbox"/>	<input type="checkbox"/>	<input type="checkbox"/>	<input type="checkbox"/>	<input type="checkbox"/>	<input type="checkbox"/>	<input type="checkbox"/>	<input type="checkbox"/>	<input type="checkbox"/>	<input type="checkbox"/>
Cover Page Logo	<input type="checkbox"/>	<input type="checkbox"/>	<input type="checkbox"/>	<input type="checkbox"/>	<input type="checkbox"/>	<input type="checkbox"/>	<input type="checkbox"/>	<input type="checkbox"/>	<input type="checkbox"/>	<input type="checkbox"/>	<input type="checkbox"/>	<input type="checkbox"/>
Cover Page Executive Photo	<input type="checkbox"/>	<input type="checkbox"/>	<input type="checkbox"/>	<input type="checkbox"/>	<input type="checkbox"/>	<input type="checkbox"/>	<input type="checkbox"/>	<input type="checkbox"/>	<input type="checkbox"/>	<input type="checkbox"/>	<input type="checkbox"/>	<input type="checkbox"/>
TradeShow Newsletter Advertising	<input type="checkbox"/>	<input type="checkbox"/>	<input type="checkbox"/>	<input type="checkbox"/>	<input type="checkbox"/>	<input type="checkbox"/>	<input type="checkbox"/>	<input type="checkbox"/>	<input type="checkbox"/>	<input type="checkbox"/>	<input type="checkbox"/>	<input type="checkbox"/>
ICT Executive Summit Events	<input type="checkbox"/>	<input type="checkbox"/>	<input type="checkbox"/>	<input type="checkbox"/>	<input type="checkbox"/>	<input type="checkbox"/>	<input type="checkbox"/>	<input type="checkbox"/>	<input type="checkbox"/>	<input type="checkbox"/>	<input type="checkbox"/>	<input type="checkbox"/>
TradeShow and Event Partnerships	<input type="checkbox"/>	<input type="checkbox"/>	<input type="checkbox"/>	<input type="checkbox"/>	<input type="checkbox"/>	<input type="checkbox"/>	<input type="checkbox"/>	<input type="checkbox"/>	<input type="checkbox"/>	<input type="checkbox"/>	<input type="checkbox"/>	<input type="checkbox"/>
Webinar Branding Sponsorship	<input type="checkbox"/>	<input type="checkbox"/>	<input type="checkbox"/>	<input type="checkbox"/>	<input type="checkbox"/>	<input type="checkbox"/>	<input type="checkbox"/>	<input type="checkbox"/>	<input type="checkbox"/>	<input type="checkbox"/>	<input type="checkbox"/>	<input type="checkbox"/>
Innovation Awards Sponsorship	<input type="checkbox"/>	<input type="checkbox"/>	<input type="checkbox"/>	<input type="checkbox"/>	<input type="checkbox"/>	<input type="checkbox"/>	<input type="checkbox"/>	<input type="checkbox"/>	<input type="checkbox"/>	<input type="checkbox"/>	<input type="checkbox"/>	<input type="checkbox"/>
Marketing, Writing, and Design Services	<input type="checkbox"/>	<input type="checkbox"/>	<input type="checkbox"/>	<input type="checkbox"/>	<input type="checkbox"/>	<input type="checkbox"/>	<input type="checkbox"/>	<input type="checkbox"/>	<input type="checkbox"/>	<input type="checkbox"/>	<input type="checkbox"/>	<input type="checkbox"/>

THOUGHT LEADERSHIP:

Company, Executive, or Technology Spotlight Article	<input type="checkbox"/>	<input type="checkbox"/>	<input type="checkbox"/>	<input type="checkbox"/>	<input type="checkbox"/>	<input type="checkbox"/>	<input type="checkbox"/>	<input type="checkbox"/>	<input type="checkbox"/>	<input type="checkbox"/>	<input type="checkbox"/>	<input type="checkbox"/>
Sponsored Thought Leadership Article	<input type="checkbox"/>	<input type="checkbox"/>	<input type="checkbox"/>	<input type="checkbox"/>	<input type="checkbox"/>	<input type="checkbox"/>	<input type="checkbox"/>	<input type="checkbox"/>	<input type="checkbox"/>	<input type="checkbox"/>	<input type="checkbox"/>	<input type="checkbox"/>
Commissioned Article	<input type="checkbox"/>	<input type="checkbox"/>	<input type="checkbox"/>	<input type="checkbox"/>	<input type="checkbox"/>	<input type="checkbox"/>	<input type="checkbox"/>	<input type="checkbox"/>	<input type="checkbox"/>	<input type="checkbox"/>	<input type="checkbox"/>	<input type="checkbox"/>
Executive Spotlight/Video Interview	<input type="checkbox"/>	<input type="checkbox"/>	<input type="checkbox"/>	<input type="checkbox"/>	<input type="checkbox"/>	<input type="checkbox"/>	<input type="checkbox"/>	<input type="checkbox"/>	<input type="checkbox"/>	<input type="checkbox"/>	<input type="checkbox"/>	<input type="checkbox"/>
Whiteboard Video	<input type="checkbox"/>	<input type="checkbox"/>	<input type="checkbox"/>	<input type="checkbox"/>	<input type="checkbox"/>	<input type="checkbox"/>	<input type="checkbox"/>	<input type="checkbox"/>	<input type="checkbox"/>	<input type="checkbox"/>	<input type="checkbox"/>	<input type="checkbox"/>
Whitepaper Writing and Distribution	<input type="checkbox"/>	<input type="checkbox"/>	<input type="checkbox"/>	<input type="checkbox"/>	<input type="checkbox"/>	<input type="checkbox"/>	<input type="checkbox"/>	<input type="checkbox"/>	<input type="checkbox"/>	<input type="checkbox"/>	<input type="checkbox"/>	<input type="checkbox"/>
Resource Center Asset Hosting	<input type="checkbox"/>	<input type="checkbox"/>	<input type="checkbox"/>	<input type="checkbox"/>	<input type="checkbox"/>	<input type="checkbox"/>	<input type="checkbox"/>	<input type="checkbox"/>	<input type="checkbox"/>	<input type="checkbox"/>	<input type="checkbox"/>	<input type="checkbox"/>
Marketplace Directory Listing	<input type="checkbox"/>	<input type="checkbox"/>	<input type="checkbox"/>	<input type="checkbox"/>	<input type="checkbox"/>	<input type="checkbox"/>	<input type="checkbox"/>	<input type="checkbox"/>	<input type="checkbox"/>	<input type="checkbox"/>	<input type="checkbox"/>	<input type="checkbox"/>
Industry Reports and Surveys	<input type="checkbox"/>	<input type="checkbox"/>	<input type="checkbox"/>	<input type="checkbox"/>	<input type="checkbox"/>	<input type="checkbox"/>	<input type="checkbox"/>	<input type="checkbox"/>	<input type="checkbox"/>	<input type="checkbox"/>	<input type="checkbox"/>	<input type="checkbox"/>
ICT Executive Summit Events	<input type="checkbox"/>	<input type="checkbox"/>	<input type="checkbox"/>	<input type="checkbox"/>	<input type="checkbox"/>	<input type="checkbox"/>	<input type="checkbox"/>	<input type="checkbox"/>	<input type="checkbox"/>	<input type="checkbox"/>	<input type="checkbox"/>	<input type="checkbox"/>
Innovation Awards	<input type="checkbox"/>	<input type="checkbox"/>	<input type="checkbox"/>	<input type="checkbox"/>	<input type="checkbox"/>	<input type="checkbox"/>	<input type="checkbox"/>	<input type="checkbox"/>	<input type="checkbox"/>	<input type="checkbox"/>	<input type="checkbox"/>	<input type="checkbox"/>
Webinar Participation	<input type="checkbox"/>	<input type="checkbox"/>	<input type="checkbox"/>	<input type="checkbox"/>	<input type="checkbox"/>	<input type="checkbox"/>	<input type="checkbox"/>	<input type="checkbox"/>	<input type="checkbox"/>	<input type="checkbox"/>	<input type="checkbox"/>	<input type="checkbox"/>
Pipeline Guest Speaking & Event Support	<input type="checkbox"/>	<input type="checkbox"/>	<input type="checkbox"/>	<input type="checkbox"/>	<input type="checkbox"/>	<input type="checkbox"/>	<input type="checkbox"/>	<input type="checkbox"/>	<input type="checkbox"/>	<input type="checkbox"/>	<input type="checkbox"/>	<input type="checkbox"/>
Pipeline Guest Blogging	<input type="checkbox"/>	<input type="checkbox"/>	<input type="checkbox"/>	<input type="checkbox"/>	<input type="checkbox"/>	<input type="checkbox"/>	<input type="checkbox"/>	<input type="checkbox"/>	<input type="checkbox"/>	<input type="checkbox"/>	<input type="checkbox"/>	<input type="checkbox"/>

LEAD GENERATION:

List Rentals with Lead Reports	<input type="checkbox"/>	<input type="checkbox"/>	<input type="checkbox"/>	<input type="checkbox"/>	<input type="checkbox"/>	<input type="checkbox"/>	<input type="checkbox"/>	<input type="checkbox"/>	<input type="checkbox"/>	<input type="checkbox"/>	<input type="checkbox"/>	<input type="checkbox"/>
Direct Content Advertising	<input type="checkbox"/>	<input type="checkbox"/>	<input type="checkbox"/>	<input type="checkbox"/>	<input type="checkbox"/>	<input type="checkbox"/>	<input type="checkbox"/>	<input type="checkbox"/>	<input type="checkbox"/>	<input type="checkbox"/>	<input type="checkbox"/>	<input type="checkbox"/>
Resource Center Asset Hosting	<input type="checkbox"/>	<input type="checkbox"/>	<input type="checkbox"/>	<input type="checkbox"/>	<input type="checkbox"/>	<input type="checkbox"/>	<input type="checkbox"/>	<input type="checkbox"/>	<input type="checkbox"/>	<input type="checkbox"/>	<input type="checkbox"/>	<input type="checkbox"/>
Content Distribution and Sponsorship	<input type="checkbox"/>	<input type="checkbox"/>	<input type="checkbox"/>	<input type="checkbox"/>	<input type="checkbox"/>	<input type="checkbox"/>	<input type="checkbox"/>	<input type="checkbox"/>	<input type="checkbox"/>	<input type="checkbox"/>	<input type="checkbox"/>	<input type="checkbox"/>
Spotlight Articles	<input type="checkbox"/>	<input type="checkbox"/>	<input type="checkbox"/>	<input type="checkbox"/>	<input type="checkbox"/>	<input type="checkbox"/>	<input type="checkbox"/>	<input type="checkbox"/>	<input type="checkbox"/>	<input type="checkbox"/>	<input type="checkbox"/>	<input type="checkbox"/>
Sponsored Articles	<input type="checkbox"/>	<input type="checkbox"/>	<input type="checkbox"/>	<input type="checkbox"/>	<input type="checkbox"/>	<input type="checkbox"/>	<input type="checkbox"/>	<input type="checkbox"/>	<input type="checkbox"/>	<input type="checkbox"/>	<input type="checkbox"/>	<input type="checkbox"/>
Digital or Physical Article Reprints	<input type="checkbox"/>	<input type="checkbox"/>	<input type="checkbox"/>	<input type="checkbox"/>	<input type="checkbox"/>	<input type="checkbox"/>	<input type="checkbox"/>	<input type="checkbox"/>	<input type="checkbox"/>	<input type="checkbox"/>	<input type="checkbox"/>	<input type="checkbox"/>
ICT Executive Summit	<input type="checkbox"/>	<input type="checkbox"/>	<input type="checkbox"/>	<input type="checkbox"/>	<input type="checkbox"/>	<input type="checkbox"/>	<input type="checkbox"/>	<input type="checkbox"/>	<input type="checkbox"/>	<input type="checkbox"/>	<input type="checkbox"/>	<input type="checkbox"/>
Webinars with Extended Lead Generation	<input type="checkbox"/>	<input type="checkbox"/>	<input type="checkbox"/>	<input type="checkbox"/>	<input type="checkbox"/>	<input type="checkbox"/>	<input type="checkbox"/>	<input type="checkbox"/>	<input type="checkbox"/>	<input type="checkbox"/>	<input type="checkbox"/>	<input type="checkbox"/>
Marketplace Directory Listing	<input type="checkbox"/>	<input type="checkbox"/>	<input type="checkbox"/>	<input type="checkbox"/>	<input type="checkbox"/>	<input type="checkbox"/>	<input type="checkbox"/>	<input type="checkbox"/>	<input type="checkbox"/>	<input type="checkbox"/>	<input type="checkbox"/>	<input type="checkbox"/>

Not for distribution or reproduction.

COLLECT. MONITOR. ANALYZE. VISUALIZE.



Empowering Law Enforcement with Actionable Intelligence

SS8 Networks provides the fastest and simplest way to collect, monitor, analyze, and visualize lawful intelligence data. For more than 20 years, we have optimized our solutions for Law Enforcement Agency (LEA) analysts and enabled them to turn complex data sets into actionable intelligence in real-time.

We help LEAs expedite their success despite the growing number of connected devices, methods of communication, and end-to-end encryption. We empower LEAs with simplified data management, real-time visualizations, and workflow-driven solutions purpose-built for analysts.

- USE CASES
- Evidence Gathering
 - Organized Crime Investigation
 - Counter-Terrorism
 - Financial Crime
 - Security Operations

ACTIVE IN 35 COUNTRIES COVERING MORE THAN 1BN SUBSCRIBERS

6 OF THE WORLD'S LARGEST INTELLIGENCE AGENCIES USE SS8

70% MARKET SHARE US&UK We are the top provider in the US and UK for Mediation and Monitoring platforms.

150+ VENDOR INTERFACES Proven network equipment interoperability with over 150 vendor interfaces to expedite deployment.

Intellego XT SS8's Intellego XT platform provides superior data monitoring, fusion and analysis solutions to help Law Enforcement and Intelligence Agencies combat crime.

Not for distribution or reproduction.





info@sevone.com | www.sevone.com

Not for distribution or reproduction.

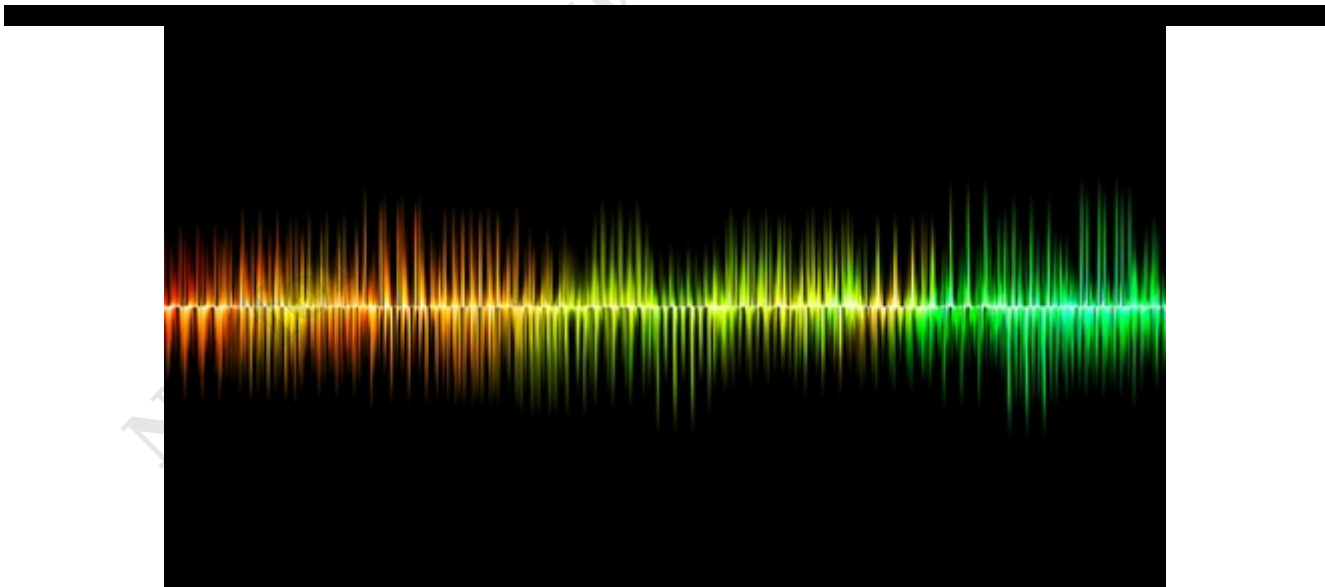


Towards a Personalized Mobile Experience

How Converged Subscriber Management Will Impact the Life of End-users.

www.tekelec.com

tion or reproduction.



[Upload Content](#)

[View More Content](#)

© 2025, All information contained herein is the sole property of Pipeline Publishing, LLC. Pipeline Publishing L.L.C. reserves all rights and privileges regarding the use of this information. Any unauthorized use, such as copying, modifying, or reprinting, will be prosecuted under the fullest extent under the governing law.



Not for distribution or reproduction.