

- Past Issues
- News Center
- Research Center
 - Webinars
 - Events
 - Sponsors
 - Members

FEATURED SPONSOR:



Let's create → AI models to predict trends before they happen.

ibm.com

IN THIS ISSUE

- ▶ Data Center Energy Innovations
- ▶ The New Network Ecosystem
- ▶ Top 5 Network Megatrends
- ▶ Observability for SD-WAN
- ▶ Network Modernization
- ▶ NaaS for Enterprises
- ▶ Agility & Strategic Colocation
- ▶ The CSP-MSP Evolution
- ▶ The Rise of Fiber Optics
- ▶ GenAI & Network Risks
- ▶ Letter from the Editor
- ▶ IT and Telecom Industry News
- ▶ Article Index



PIPELINE / VOLUME 20 / ISSUE 10

PL

POWERING NETWORKS THE EVOLUTION OF ENERGY

TOP 5

NETWORK TRENDS

THE NEW NETWORK ECOSYSTEM

FROM: ORACLE

NETWORK OBSERVABILITY FOR SD-WAN

MODERNIZING NETWORKS

WITH: FUJITSU

BUILDING NEW NETWORKS

WITH AI + NAAS

STRATEGIC COLOCATION

THE VALUE OF MSPs
THE RISE OF FIBER
PREPARING FOR GENAI RISKS

NETWORK EVOLUTION

NEWSWIRE



Not for distribution or reproduction

LATEST UPDATES

ADVANCED ANALYTICS

WEBINAR:

A Dynamic Panel Discussion
Featuring Industry Leaders

PARTICIPATE



Pipeline

The Impact of Transformation



A Dynamic Panel Discussion
Featuring Industry Leaders

VIEW



Pipeline

Research Center

- Promote Content & Collateral
- Target-market Visibility
- SEO Optimized
- Capture Sales Leads

UPLOAD ASSETS

Pipeline



Be Recognized as a
Top Industry Innovator



EXCLUSIVE
SPONSORSHIP
PACKAGES
AVAILABLE

Hyperinteractive Ads

- Targeted
- Perpetual
- Extensible
- Hyperinteractive
- Capture Opportunities

PLACE YOUR ADS NOW

Pipeline



Dynamic Webinars

- Superior Quality
- Engage Buyers
- Extensive Lead Gen
- Expert Moderation
- Speaker Support
- Advanced Platform

[REQUEST WEBINAR INFO](#)

Pipeline

Memberships

- Unlimited Services
- Best Pricing
- Elevated Visibility
- Direct Access

[BUILD YOUR PACKAGE](#)

Pipeline

The Network Transformation Imperative

A Dynamic Panel Discussion
Featuring Industry Leaders

[VIEW](#)



Pipeline

Pipeline Video Services

- On-site Videos
- Animation and Whiteboard
- User Interface Demonstrations
- Editorial Interviews

[GET STARTED >>](#)

Pipeline

Pipeline **WEBINAR**

Leverage *Pipeline* to
Expand Your Brand &
Your Thought Leadership

Ads

Editorial

Events

Awards

Branding

Memberships

News

Webinars

Research

[WATCH VIDEO NOW](#)

Not for distribution or reproduction



Not for distribution or reproduction

Pipeline
MARKET RESEARCH

**CUSTOM RESEARCH
REPORTS & SURVEYS**

LEVERAGE THE
COLLECTIVE KNOWLEDGE
OF THE GLOBAL MARKET

[GET PRICING & DETAILS](#)

**HOW TO
BE INCLUDED IN PIPELINE**

[CLICK HERE ▶](#)



Pipeline Video Services

- On-site Videos
- Animation and Whiteboard
- User Interface Demonstrations
- Editorial Interviews

[GET STARTED >>](#)

Pipeline

Check Out the Latest Content

- Whitepapers
- Case Studies
- Webinars
- Videos
- Articles
- Surveys

[READ NOW >>](#)

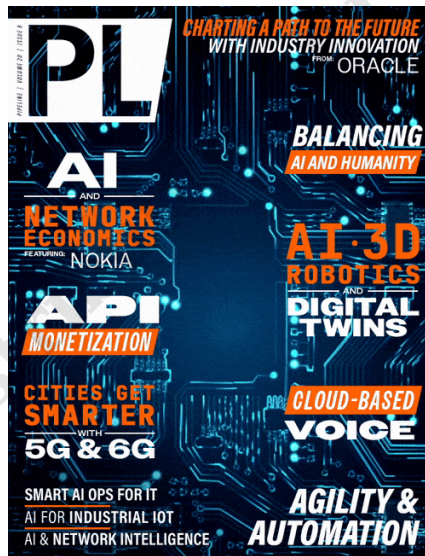
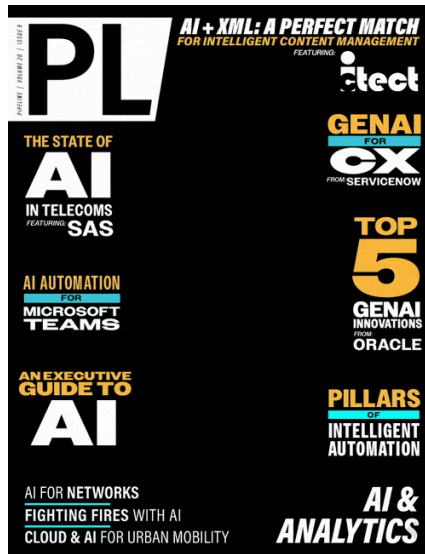
Pipeline

CONNECT WITH US

[Follow @PipelineWire](#)

[Back](#) [More](#)

Latest Issues





[Advertising Placements](#)

[Sponsor Articles and Issues](#)

[View More Issues](#)

TRENDING NEWS

Nokia and NL-ix Deploy Deepfield

[Full Story>](#)

ATT Becomes First US CSP to Achieve 'Running on ODA' Status

[Full Story>](#)

Telenor Microfinance Bank And Ericsson Collaborate

[Full Story>](#)

Blackrock, Global Infrastructure Partners, Microsoft and MGX Launch New AI Partnership

[Full Story>](#)

Are You Ready for SCTE TechExpo24?

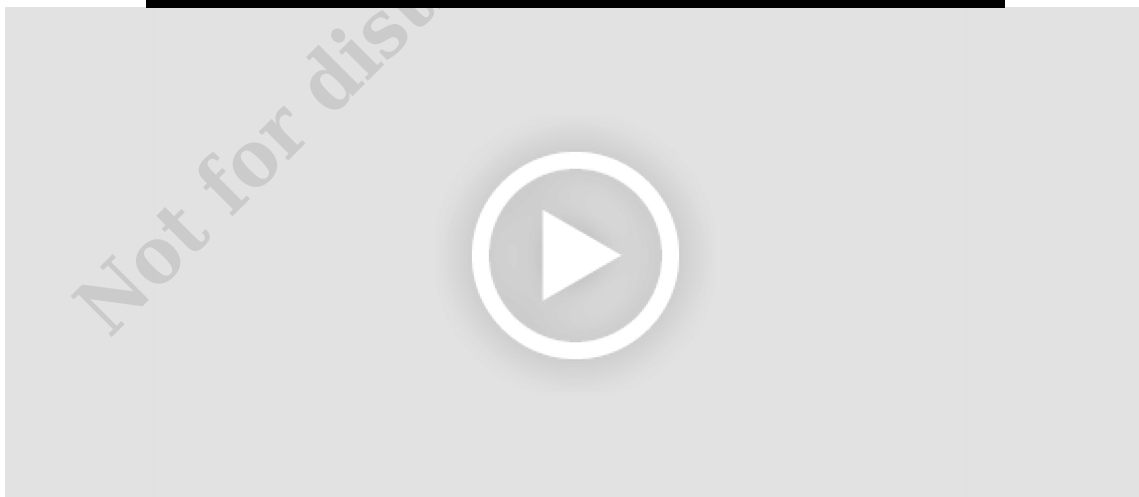
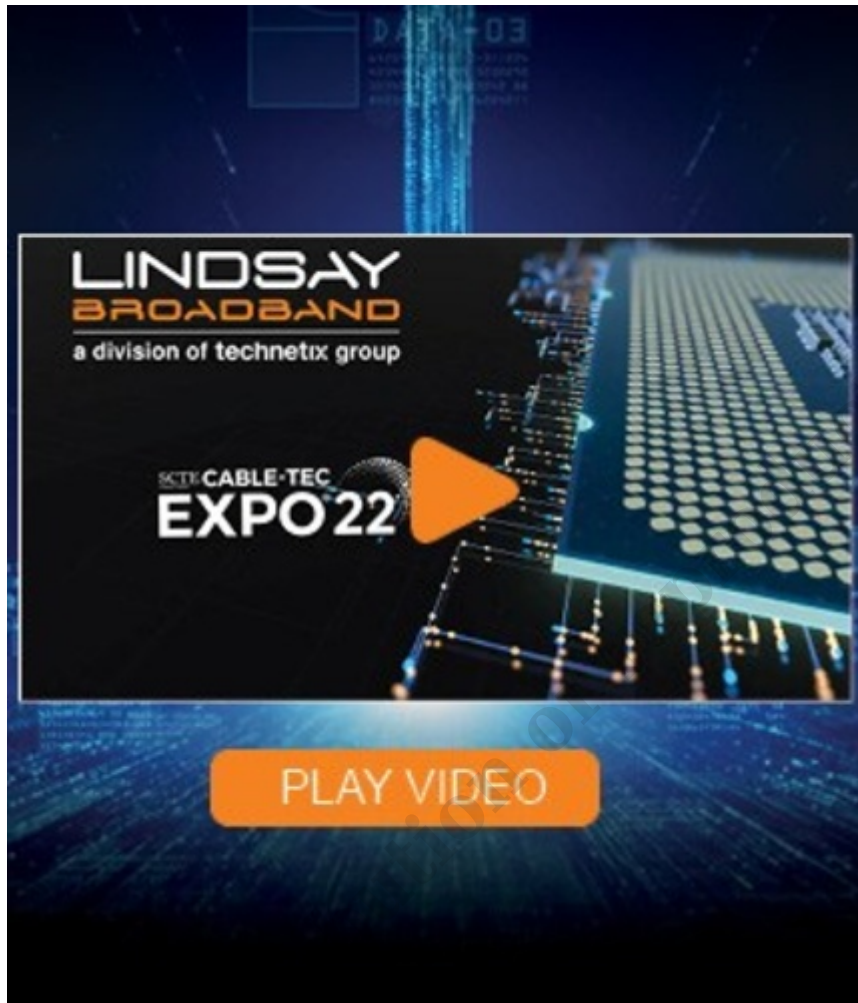
[Full Story>](#)

KT Corporation And Microsoft Accelerate AI Innovation In Korea

[Full Story>](#)

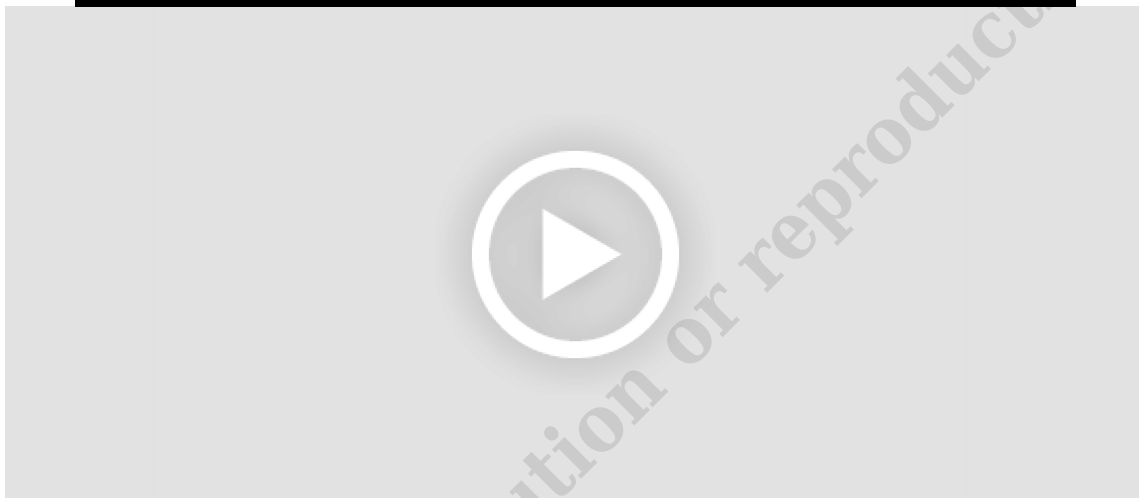
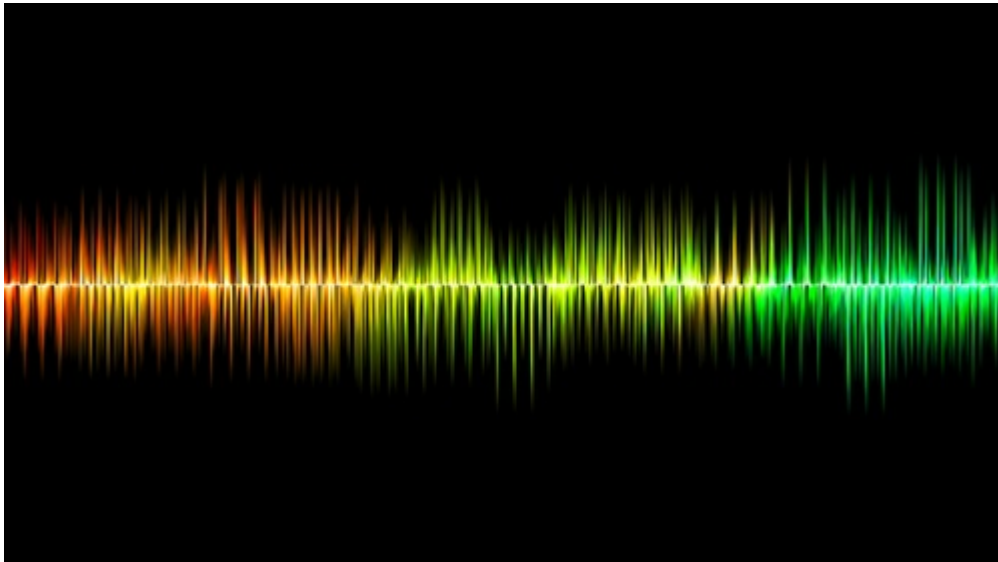
[View More News](#)

Featured Content



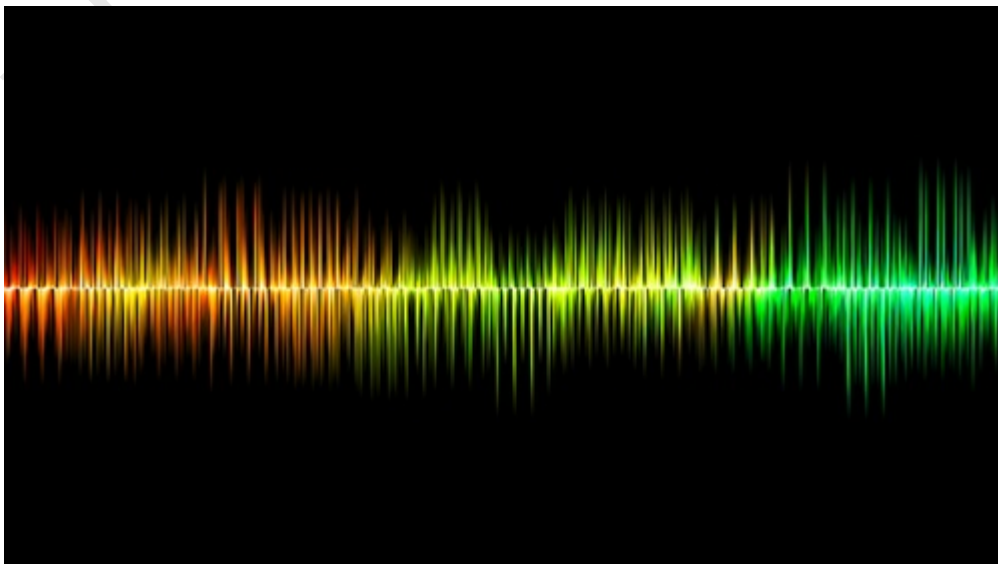
End-to-End Solutions for Broadband Networks

In case you missed Lindsay Broadband - a division of Technetix group at the SCTE Cable-Tec Expo, this video highlights the must-have, end-to-end solutions for your network.



Predicting Colonial Pipeline: Mitigating Risk and Compliance

Mitigating risk and compliance for lawful intercept using lawful intelligence is explored in this Pipeline article feature SS8. Learn how CSPs can comply with lawful intercept regulation, while empowering law information with critical, real-time data.





Podcast: The Evolution to 6G

The world's eyes are already looking forward to the potential of 6G. Demands resulting from innovative use cases, for instance specific requirements from different industries and other user groups, as well as overarching goals like sustainability, are driving the standardization and development of mobile technologies.

[Request Video](#)

[View More Videos](#)

Latest Webinars

Previously live

IT Ukraine Association **JEVERA**
software solutions

23 NOV 2023
4PM EET
online

Discover how to mitigate risks of 2024

**“DIGITAL TRANSFORMATION
FOR TELCOS: A 101 GUIDELINE”**



The Impact of Transformation

*A Dynamic Panel Discussion Featuring
The Industry's Top Thought Leaders*



© 2018. All rights reserved.



The Network Transformation Imperative

*A Dynamic Panel Discussion Featuring
The Industry's Top Thought Leaders*



© 2018. All rights reserved.



Agile Architecture for Digital Innovation

*A Dynamic Panel Discussion Featuring
The Industry's Top Thought Leaders*



© 2017. All rights reserved.

[Participate in Webinars](#)

[Join Next Webinar](#)

[View More Webinars](#)

Latest Articles



Data Center Energy Innovations

[Order Article Reprint](#) [Read More](#)



The New Network Ecosystem

[Order Article Reprint](#) [Read More](#)



Top 5 Network Megatrends

[Order Article Reprint](#) [Read More](#)



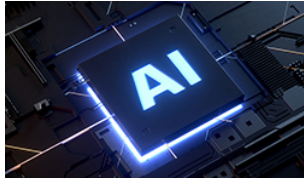
Observability for SD-WAN

[Order Article Reprint](#) [Read More](#)

[Sponsor Articles](#)

[Advertising Placements](#)

TRENDING ARTICLES



Top 5 GenAI Innovations



IT & Telecom Industry News



AI + XML for Intelligent Content



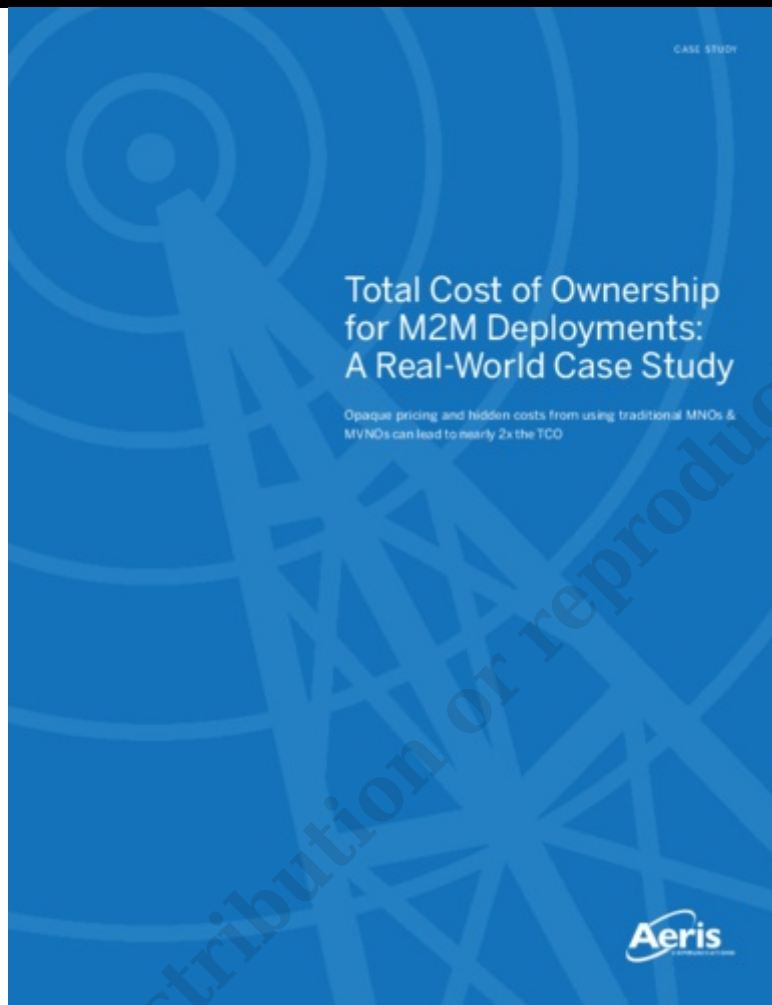
Agile Industry Innovation



Use Cases for AI in IIoT

[View More Articles](#)

Other Featured Content



Whitepaper by



CustomCall
DATA SYSTEMS

1009 E Whitney Way
Madison, WI 53711
608-274-9009
www.customcall.com

*The
Commercial Market Opportunity
For*

(Non-Tier 1)

Cable MSOs



A whitepaper covering the current industry, opportunities, and requirements for a non-Tier 1 Cable MSO entering the business services market.

Completed March 1, 2012

Copyright ©2012 CustomCall Data Systems, Inc.
All rights reserved.

Not for distribution or reproduction.



Making it work and making a profit are the two greatest challenges IPTV service providers face. From building your network to billing for service, CHR is with you every step of the way.

■ **IMPROVE INTEGRATION**

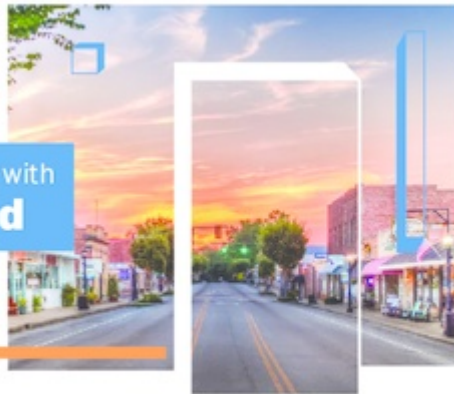
Whether you're integrating legacy and new-gen systems or middleware and BSS, the varieties of IPTV implementations are vast. With more than 60 years serving communications service providers in every capacity of their business, CHR has the expertise and resources to simplify your IPTV experience. Our holistic approach and experienced team work with you to weave together the many elements necessary to make IPTV work.

■ **PROMOTE PROFITABILITY**

As competition escalates and regulatory support declines, the battle for profit becomes ever more crucial. Uncover new ways to increase profits margins and drive new revenue by leveraging CHR's cross-4 back line philosophy and comprehensive service offerings. CHR's Integrated Services and In-Room Billing team will help you spend time in markets—more quickly realizing return on your investment and improving customer retention with professionally provisioned home networks. Create an unparalleled customer experience with Media@™—reducing churn and raising ASPU.



Building the Future with **Broadband**



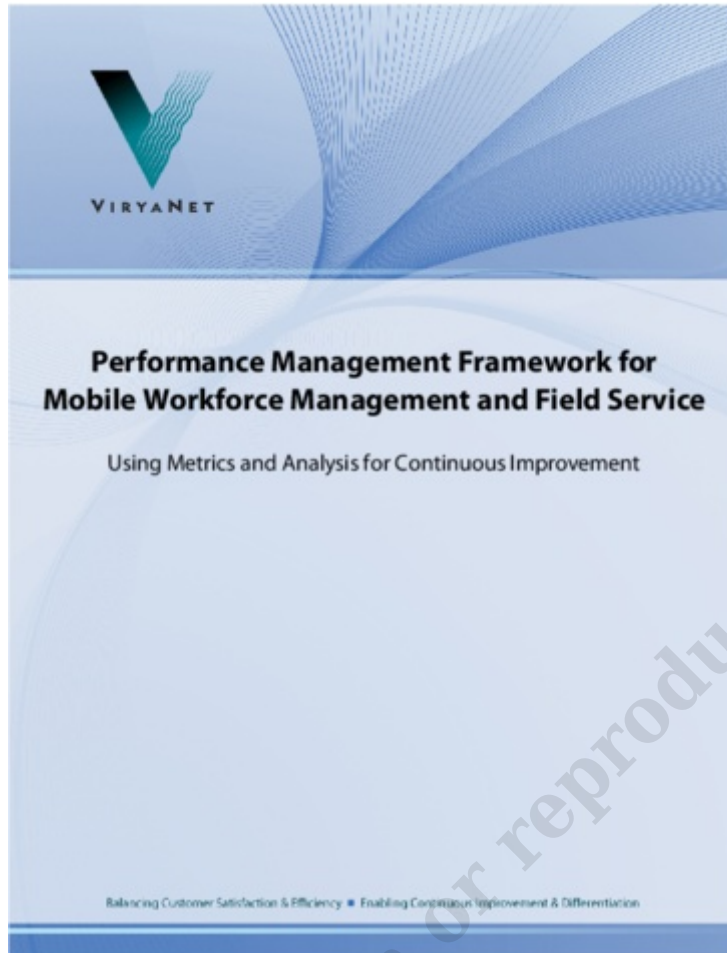
Creating Communities

Communications service providers play a vital role in building rural America. Connecting unserved or under served communities through broadband technology improves their way of life and closes the digital divide by providing economic opportunities otherwise not possible.

CHR Solutions is a proven industry leader with over 75 years of experience and will help you invest in broadband. Our complete solution gives you the tools necessary to make strategic business decisions for building, marketing, and monetizing your network.

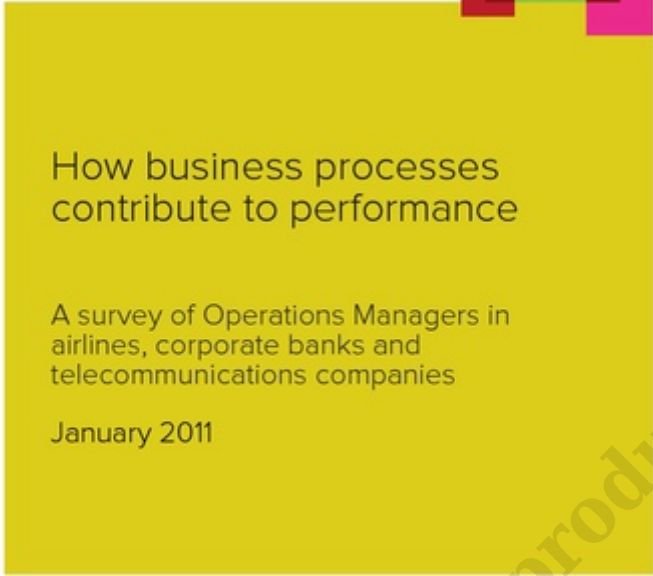
ENGINEERING SERVICES	BUSINESS SOFTWARE	BUSINESS CONSULTING
Network Planning & Design Broadband Viability and Feasibility Studies Outside Plant Engineering (Architecture, Field Notes, Design, Permitting) GIS/CAD Services Project/Construction Management Loan & Grant Assistance	Customer Management Billing Service Activation Sales & Marketing Order Capture Facilities Management Dashboards Case Management Financials	Regulatory Marketing Product Management Customer Service Billing CyberSecurity NOC Monitoring Invoice Fulfillment Systems Rollout

Not for distribution or reproduction.



▶ **OPERATION
NEXTERDAY**

comptel



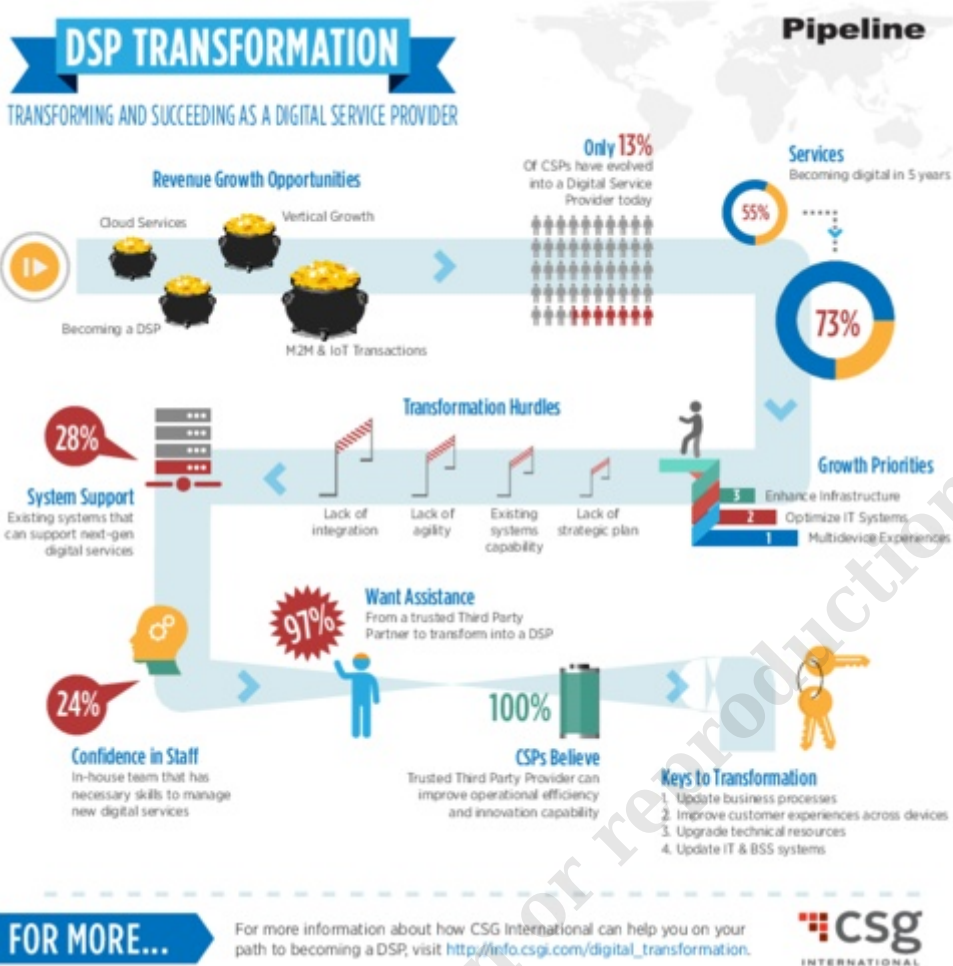
How business processes
contribute to performance

A survey of Operations Managers in
airlines, corporate banks and
telecommunications companies

January 2011



Not for distribution or reproduction.



Brochures



Design, Deliver and Manage Triple-Play Services



Whitepapers

Not for distribution or reproduction.



info@sevone.com | www.sevone.com

Case Studies

Not for distribution or reproduction.

Stratecast

FROST & SULLIVAN

August 2012

**Stratecast Solution Strategies: Multiple Views,
Not Multiple Versions at Telkom South Africa**

Stratecast Analysis by
Nancee Ruzicka



OSS/BSS Global Competitive Strategies
(OSSCS)
Volume 13, Number 06

Brochures



From wireless to wireline networks, CHR has the insight and expertise that empowers the services connecting customers and communities. We stand ready to partner with you on all your project needs—from concept to construction. Whether you're deploying new networks or launching next-generation services, from funding to field services, CHR is with you every step of the way.

CHR's Connected Services provide the platform for next-gen networks and brings them to life. Our expertise in execution enables IP evolution—guaranteeing improved network reliability and scalability to support the services that maximize ARPU, reduce churn and generate new revenue while achieving regulatory requirements and reducing CAPEX.

Not for distribution outside production.



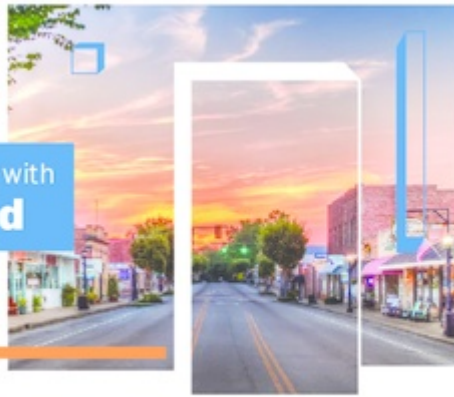
Monitoring 4G LTE and IMS
Performance at Scale
White Paper

info@sevone.com | www.sevone.com

Not for distribution or reproduction.



Building the Future with **Broadband**



Creating Communities

Communications service providers play a vital role in building rural America. Connecting unserved or under served communities through broadband technology improves their way of life and closes the digital divide by providing economic opportunities otherwise not possible.

CHR Solutions is a proven industry leader with over 75 years of experience and will help you invest in broadband. Our complete solution gives you the tools necessary to make strategic business decisions for building, marketing, and monetizing your network.

ENGINEERING SERVICES	BUSINESS SOFTWARE	BUSINESS CONSULTING
Network Planning & Design Broadband Viability and Feasibility Studies Outside Plant Engineering (Architecture, Field Notes, Design, Permitting) GIS/CAD Services Project/Construction Management Loan & Grant Assistance	Customer Management Billing Service Activation Sales & Marketing Order Capture Facilities Management Dashboards Case Management Financials	Regulatory Marketing Product Management Customer Service Billing CyberSecurity NOC Monitoring Invoice Fulfillment Systems Rollout

Not for distribution or reproduction.



BSP

BILL SHOCK

PREVENTION

Real-Time Solutions for Mobile Service Providers

Not for distribution or reproduction.



COLLECT. MONITOR. ANALYZE. VISUALIZE.



Actionable Intelligence for a Safe, Secure and Connected World

SS8 Networks provides the fastest and simplest way to collect, monitor, analyze, and visualize lawful interception data. For more than 20 years, we have been evolving and innovating to match the changing needs of Communications Service Providers (CSPs) and Law Enforcement Agencies (LEAs), while delivering comprehensive solutions that are easy to use and optimized for the best results.

Our solutions make analyzing, enriching and managing complex data sets simple, helping LEAs stop organized crime, catch criminals, and prevent terror attacks. For CSPs, we provide a trusted foundation for meeting regulatory requirements efficiently and effectively.

OUR SOLUTIONS

- Complete mediation and interception
- Law enforcement monitoring center
- 56** 50 regulatory compliance
- End-to-end Lawful Intelligence system
- Comprehensive data analytics

ACTIVE IN **35** COUNTRIES
COVERING **1BN** SUBSCRIBERS

70% MARKET SHARE US&UK
We are the top provider in the US and UK for Mediation and Monitoring platforms.

8 OF 14 WORLD'S LARGEST
We work with 8 of the world's 14 largest communication service providers.

150 VENDOR INTERFACES
Proven network equipment interoperability with over 150 vendor interfaces to expedite deployment.

ONTOLOGY™

ONTOLOGY 5

i360 | **FOR NETWORK OPERATORS**



Know your network: Now.

Ontology Real Time Inventory for NFV

September 2015



The 2014 COMET Executive Summit

November 5 - 7, 2014 — San Diego, California

Follow event highlights on Twitter: #COMETSUMMIT

Pipeline continues its legacy of bringing together the world's leading service providers and technology innovators this fall at the 2014 COMET Executive Summit.

This exclusive event is gathering key executives from the world's leading operators with key technology developers and enterprises in an intimate symposium to explore the latest trends and challenges in communications and entertainment technology (COMET).

The COMET Executive Summit is a flexible, highly interactive format that is filled with unprecedented networking opportunities designed to build relationships that can be carried forward to solve the issues and challenges facing service providers and industry today.

Register today to stay on the edge of topics to be covered at the COMET Executive Summit, such as:

- Network security
- Big data & analytics
- Agile Architectures
- Network evolution & virtualization
- Customer experience management (CEM)
- Exploring cloud offerings
- Enabling new business models
- Delivering and assuring digital services
- Leveraging content

Attend CES 2014

Pipeline has arranged special accommodation rates more than half off the regular hotel rates for all CES attendees at the US Grant Luxury Collection Hotel, part of Starwood Hotels & Resorts Worldwide. Space is very limited.

Register and book your accommodations today!

EVENT SPONSORS



SPEAKERS & PARTICIPANTS



For more information and to register, visit:
www.pipelinepub.com/enb/comet/2014_comet_summit.php

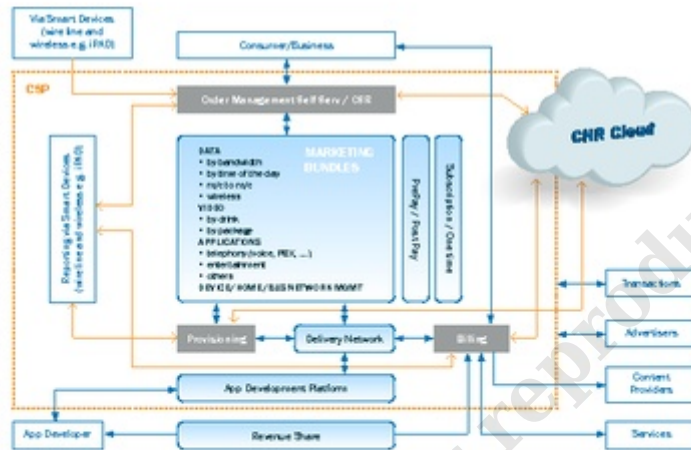
cloud services

Leveraging the power of Cloud Services is crucial to the future of your company. With converging technologies and crippling competitive pressures, CHR's Cloud offers answers in shortest times. Building your business becomes only a question of how high and how far you want the Cloud to carry you.

GENERATE NEW REVENUE

With CHR Solutions' Cloud Services, the sky is the limit. Drive down operating costs, improve efficiencies and create new revenue streams to elevate your business.

Over the last several years, CHR has constructed a leading edge ecosystem which supports advertising, applications, transactions, services and content. This synergistic environment offers limitless opportunity for creating new revenue without the capital expense.



Not for distribution or reproduction.

Digital transformation, which is the key for higher agility, efficiency, cost reduction and improved customer experience, is inevitable for CSPs to survive in the new digital economy. However, large-scale digital transformation projects are expensive and risky and may take years to complete. Meanwhile, agile competitors are eroding your market share. Speed to digitalization is imperative.

Why Etiya's Digital Business Platforms??

Etiya Digital Business Platforms, unlike legacy BSS, will create real value for your business. They do not only provide technical capability, but offer an infrastructure to create an all-digital customer experience, with the personalization and flexibility demanded by Connected Customers. All this in a matter of months, while ensuring business continuity and, at the same time, reducing traditional BSS costs.

Advanced technology to enable better customer focus

Etiya's AI expertise and platform capabilities are used to differentiate the BSS platform via better customer insights, more personalized customer experiences and increased process automation. Knowing your customers' behaviour and needs allows personalized customer interactions and service targeting, and supports smart decision making during the customer journey, that will ultimately drive both customer and employee efficiency and satisfaction.

Etiya uses innovative AI technologies, including natural language processing (NLP) techniques and predictive analytics in its platform to help companies transform their businesses and reduce costs.

Modular, flexible, cost effective and scalable digital solutions

Etiya Digital Business Platforms are 5G ready, agile, end-to-end, and fully virtualized digital platforms. They are cloud-native, full-stack platforms that are pre-integrated into partner solutions and include all Etiya's product portfolio: Customer Relationship Management (CRM), Customer Service Management (CSM), Configure, Price, Quote (CPQ), Product Catalog, Order Management, OmniChannel Management, Billing and Charging and API gateways. They support both B2C and B2B customer segment operations.

Since the platforms use a modular, API-driven architecture, they are flexible. CSPs can select to launch a full-stack new BSS platform, to replace their legacy platform, or modernize it step-by-step, by choosing which platform components they want first and add new solutions, as needed, later.

Its cloud-compatible implementation significantly reduces up-front CapEx, and all this enables fast implementation and a cost-effective digital transformation. And easy scalability also means, that the costs grow as the business grows.

Etiya real-time, automated digital platforms use microservices to speed time-to-market for new products and enable easy experimentation with new business models and service concepts.

How does it work?

Etiya Digital Business Platforms contain three main layers: Experience, Engagement, and Enablement. Data analytics, AI, and business intelligence functions are used to add intelligence to these layers and enable personalization, process automation, and efficiency.

Etiya Digital Business Platform Solutions			
Digital Experience	Online self-care, E-commerce, Mobile App, Content Management	Open APIs	Data Analytics, AI, Business Intelligence
Digital Engagement	CRM, CPQ, Offer Management, Rewards & Loyalty, Community Management, CSM, Recommendation Engine, Order Management		
Digital Enablement	Product Catalog Management, Charging & Rating Management, Billing Management, Partner Management, Policy Management		

© 2024 Etiya. All rights reserved.

[Upload Content](#)

[View More Content](#)

© 2024, All information contained herein is the sole property of Pipeline Publishing, LLC. Pipeline Publishing L.L.C. reserves all rights and privileges regarding the use of this information. Any unauthorized use, such as copying, modifying, or reprinting, will be prosecuted under the fullest extent under the governing law.